



Photoluminescent Safety Products

When the Lights go out
Ours come ON™



IBC/IFC 2009 Photoluminescent Egress Path Marking
Code Compliant Products - Washington State

JALITE

IBC/IFC 2009 Code Compliant Photoluminescent Egress Path Marking Products are required for the following occupancy groups:

- A** - Assembly
(For Public Events)
- B** - Business
- E** - Education
- R1** - Hospitality / Hotels
- I** - Institutional / Hospital
- M** - Mercantile

New facilities 75 feet or taller that fall into one of the following occupancies must install approved luminous egress path markings as per Section 1024 of the 2009 IBC. To remain on par with newer facilities existing buildings can also install these same products.

JALITE INC
202 7th Street
Matamoras, PA 18336

800.9014374
570.491.2205
fx. 570.491.2206
sales@jaliteusa.com

www.jaliteusa.com

Introduction to Jalite

The tragedy of September 11th produced a shock felt around the world which instantly reshaped our outlook on safety in high rise buildings. The result of that fateful day was a global focus on national security, individual safety and a universal demand for a whole new set of defences against the heightened level of risk.

Because of its role in saving lives that day, Photoluminescent technology became one of the first lines of defence.

After passing a law mandating the installation of photoluminescent markings, NYC Department of Buildings asked one manufacturer to sit on its task force that determined the content and requirements of its new Reference Standard 6-1. That manufacturer was Jalite.

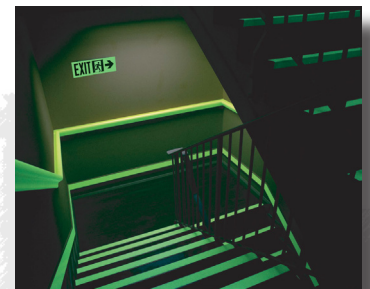


Why Jalite?

For over 30 years, Jalite has been developing code compliant directional and exit guidance systems for government, commercial and residential buildings, for hospitals, power stations and factories, for roadways and tunnels, churches, sports arenas, for airports and air planes, war ships and cruise vessels, and off shore drilling rigs. And because of its long history and work with nationally recognized researchers over the course of our history and our involvement in the process of generating other standards and codes, including work on the ISO, IMO, ASTM to mention a few.

What are photoluminescent materials?

Jalite photoluminescent materials consist of chemical phosphors which have the capacity to store energy in the form of light, releasing this energy upon removal of the activating light source. All Jalite photoluminescent materials are non-radioactive.



What does all this mean?

The current IBC Code requirements for Photoluminescent markings in high-rise buildings are in large part taken from the NYC Reference Standard 6-1 (RS6-1).

So you can be assured that Jalite products meet the code, because we helped write the code.

This guide is intended to take you through, section by section, the IBC code and enable you to choose the best Jalite products that meet the needs of your unique building in each instance.

Stair Products:

The IBC and IFC Codes require the leading edge of each step to be marked. As the only part of your egress path marking system is walked upon with any frequency, this is a critical element of your system. Jalite provides you with several attractive and proven solutions:

Easily installed Adhesive based solutions:

- 9064R - Jalite AAA Rigid PVC strips with applied foam adhesive. 1" x 49" (10 pack)
- SBA9064 - Jalite SB Aluminium Coated Photoluminescent Demarcation line (10 pack, Installed with construction adhesive, purchased separately)
- 9059R - Jalite AAA Step Marker with high contrast slip resistant strip, backed with foam adhesive. 1.5" x 49"

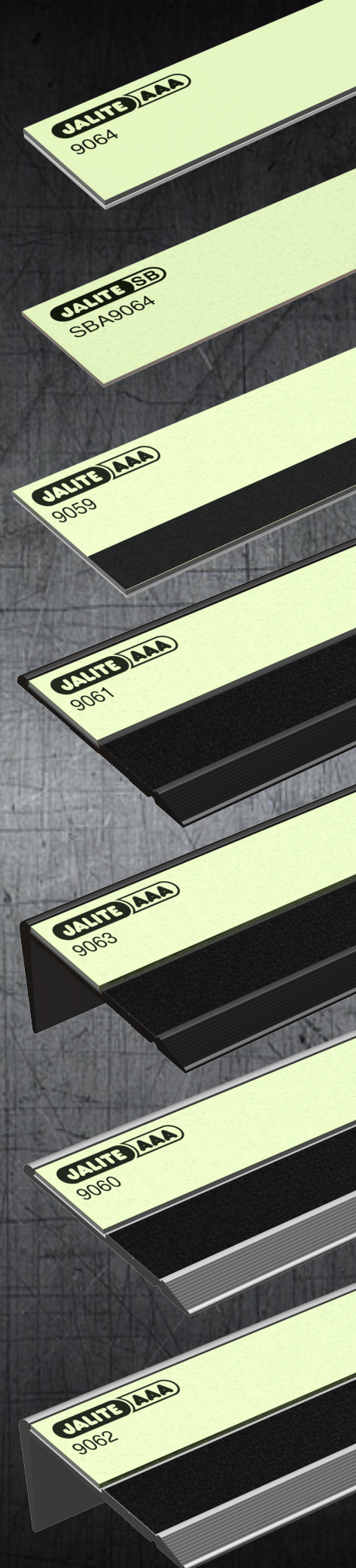
Mechanically Fastened Solutions:

- 9062 - Clear anodized aluminum nosing, with Jalite AAA rigid photoluminescent insert and slip resistant strip. 2" x 40"
- 9063 - Black anodized aluminum nosing, with Jalite AAA rigid photoluminescent insert and slip resistant strip. 2" x 40"
- 9060 - Clear anodized aluminum threshold, with Jalite AAA rigid photoluminescent insert and slip resistant strip. 2" x 40"
- 9061 - Black anodized aluminum threshold, with Jalite AAA rigid photoluminescent insert and slip resistant strip. 2" x 40"

What the code states:

1024.2.1 Steps. A solid and continuous stripe shall be applied to the horizontal leading edge of each step and shall extend for the full length of the step. Outlining stripes shall have a minimum horizontal width of 1 inch (25 mm) and a maximum width of 2 inches (51 mm). The leading edge of the stripe shall be placed at a maximum of 1/2 inch (12.7 mm) from the leading edge of the step and the stripe shall overlap the leading edge of the step by not more than 1/2 inch (12.7 mm) down the vertical face of the step.

1024.2.2 Landings. The leading edge of landings shall be marked with a stripe consistent with the dimensional requirements for steps.



JALITE

**“Products
Engineered
for life safety
applications”**



**Landing &
Corridor
Identification**

JALITE INC
202 7th Street
Matamoras, PA 18336

800.9014374
570.491.2205
fx. 570.491.2206
sales@jaliteusa.com

www.jaliteusa.com

Landings / Corridors Products:

The IBC requires that the perimeter of each landing in the stairwell and any horizontal corridor in the exit enclosure be marked. The Jalite solution is easy to install with proven durability. Jalite provides you with several attractive and proven solutions.

Jalite Solution:

- 9064R - Jalite AAA Rigid PVC strips with applied foam adhesive. 1" x 49" (10 pack)
- SBA9064 - Jalite SB Aluminium Coated Photoluminescent Demarcation line (10 pack, Installed with construction adhesive, purchased separately)

What the code states:

1024.2.4 Perimeter demarcation lines. Stair landings and other floor areas within exit enclosures, with the exception of the sides of steps, shall be provided with solid and continuous demarcation lines on the floor or on the walls or a combination of both. The stripes shall be 1 to 2 inches (25 mm to 51 mm) wide with interruptions not exceeding 4 inches (102 mm).

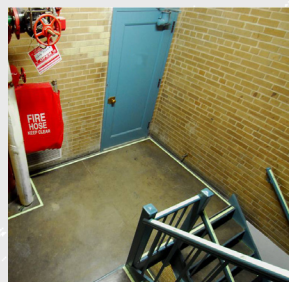
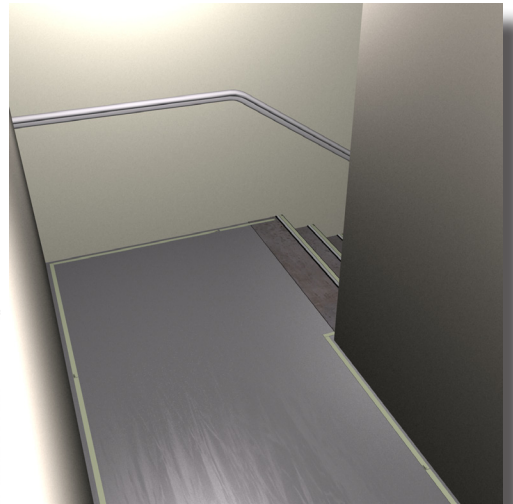
1024.2.4.1. Floor-mounted demarcation lines. Perimeter demarcation lines shall be placed within 4 inches (102 mm) of the wall and shall extend to within 2 inches (51 mm) of the markings on the leading edge of landings. The demarcation lines shall continue across the floor in front of all doors.

Exception: Demarcation lines shall not extend in front of the exit doors that lead out of an exit enclosure and through which occupants must travel to complete the exit path.

1024.2.4.2 Wall-mounted demarcation lines. Perimeter demarcation lines shall be placed on the wall with the bottom edge of the stripe no more than 4 inches (102 mm) above the finished floor. At the top or bottom of the stairs, demarcation lines shall drop vertically to the floor within 2 inches (51 mm) of the step or landing edge. Demarcation lines on walls shall transition vertically to the floor and then extend across the floor where a line on the floor is the only practical method of outlining the path. Where the wall line is broken by a door, demarcation lines on walls shall continue across the face of the door to transition to the floor and extend across the floor in front of such door.

Exception: Demarcation lines shall not extend in front of exit doors that lead out of an exit enclosure and through which occupants must travel to complete the exit path.

1024.2.4.3 Transition. Where a wall-mounted demarcation line transitions to a floor-mounted demarcation line, or vice versa, the wall mounted demarcation line shall drop vertically to the floor to meet a complementary extension of the floor-mounted demarcation line, thus forming a continuous marking.



Handrail Identification Products:

The IBC requirement calls for all handrails to be marked. This element provides occupants with the additional security of knowing where to put their hands, in addition to seeing where to put their feet. Jalite AAA self adhesive vinyl has proven to endure the test of time as it was installed in many high-rises throughout New York City in 2005 and is still holding on strong.

Jalite Solution:

- VT1003 - Jalite AAA Self adhesive vinyl tape. 1" x 33'
- VT1005 - Jalite AAA Self adhesive vinyl tape. 2" x 33'



What the code states:

1024.2.3 Handrails. All handrails and handrail extensions shall be marked with a solid and continuous stripe having a minimum width of 1 inch (25 mm). The stripe shall be placed on the top surface of the handrail for the entire length of the handrail, including extensions and newel post caps. Where handrails or handrail extensions bend or turn corners, the stripe shall not have a gap of more than 4 inches (102 mm).

Obstacle Marking Products:

Every building is unique, however in many cases the stairwell provides a protected space for critical infrastructure such as a fire main and electrical conduit. While an efficient use of protected space, if this infrastructure protrudes into the stairwell it may pose a hazard during an evacuation in the dark. Jalite AAA Self adhesive vinyl has proven itself as a strong and durable obstacle marker.

Jalite Solution:

- WT1003 - Jalite AAA Self adhesive vinyl tape, printed with 1.5" @ 45 degree black chevrons. 1" x 33'



What the code states:

1024.2.5 Obstacles. Obstacles at or below 6 feet 6 inches (1981 mm) in height and projecting more than 4 inches (102 mm) into the egress path shall be outlined with markings no less than 1 inch (25 mm) in width comprised of a pattern of alternating equal bands, of luminescent luminous material and black, with the alternating bands no more than 2 inches (51 mm) thick and angles at 45 degrees (0.79 rad). Obstacles shall include, but are not limited to, standpipes, hose cabinets, wall projections and restricted height areas. However, such markings shall not conceal any required information or indicators including, but not limited to, instructions to occupants for the use of the standpipes.

Handrail Identification

Obstacle Identification

JALITE

"With the high amount of foot traffic that our stairwells are exposed to, we found that Jalite product was much easier to maintain than the others....Jalite product also had a substantially brighter appearance than the others."

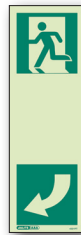
*Supervisor of Facilities and Maintenance
UPMC Montefiore Hospital*

Signage Products:

In the dark, or a smoke filled space, traditional signage will not perform its function. Identifying the correct door through which to exit from the stair or to remain on the egress path is a critical aspect of life safety during an evacuation.

Identification of the exit hardware in dark and smoke filled conditions can save lives in an emergency. Jalite fulfils this requirement with the addition of egress symbols which serve to reassure occupants during an emergency and train occupants during drills and normal use of the building to associate the NFPA 170/ ISO 7010 symbol with the egress direction.

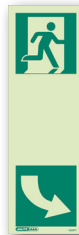
Jalite Solution:



Model: 4321

Options:
4321PTR
SBA4321PT

Description:
Wayguidance door
handle left. 4" x 12"

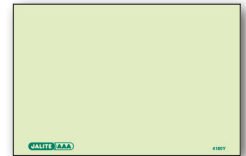


Model: 4320

Options:
4321PTR
SBA4321PT

Description:
Wayguidance door
handle right. 4" x 12"

Model: 4180



Options: 4180YR
SBA4180Y

Description:
Door handle marker.
4" x 6"

Model: 487



Options: 487PTR
SBA487PT

Description:
Wayguidance egress
symbol right. 6" x 6"

Model: 488



Options: 488PTR
SBA488PT

Description:
Wayguidance egress
symbol left. 6" x 6"

Model: 496



Options: 496CR
SBA496C

Description:
Exit Sign. 6" x 6"

Model: 4060



Options: 4060CR
SBA4060C

Description:
Exit for emergency use
only. 6" x 6"

Model: 4860



Options: 4860CR
SBA4860C

Description:
NFPA 170/ ISO 7010
straight arrow. 6" x 6"

Model: 4870



Options: 4870CR
SBA4870C

Description:
NFPA 170/ISO 7010
diagonal arrow. 6" x 6"

JALITE INC
202 7th Street
Matamoras, PA 18336

800.9014374
570.491.2205
fx. 570.491.2206
sales@jaliteusa.com

www.jaliteusa.com

Material Options: SBA - Jalite C Class Aluminium R - Jalite C Class Rigid PVC

Each sign is available in rigid PVC or Aluminum. Both are proven materials, nonflammable, non-toxic, nonradioactive, and washable.

What the code states:

1024.2.6 Doors from exit enclosures. Doors through which occupants within an exit enclosure must pass in order to complete the exit path shall be provided with markings complying with Sections 1024.2.6.1 through 1024.2.6.3.



What the code states:

1024.2.6.1 Emergency exit symbol. The doors shall be identified by a low-location luminous emergency exit symbol complying with NFPA 170. The exit symbol shall be a minimum of 4 inches (102 mm) in height and shall be mounted on the door, centered horizontally, with the top of the symbol no higher than 18 inches (457 mm) above the finished floor.



What the code states:

1024.2.6.2 Door hardware markings. Door hardware shall be marked with no less than 16 square inches (406 mm²) of luminous material. This marking shall be located behind, immediately adjacent to or on the door handle and/or escutcheon. Where a panic bar is installed, such material shall be no less than 1 inch (25 mm) wide for the entire length of the actuating bar or touchpad.



What the code states:

1024.2.6.3 Door frame markings. The top and sides of the door frame shall be marked with a solid and continuous 1-inch to 2-inch-wide (25 mm to 51 mm) stripe. Where the door molding does not provide sufficient flat surface on which to locate the stripe, the stripe shall be permitted to be located on the wall surrounding the frame.



IBC/IFC 2009 Code Compliant Photoluminescent Egress Path Marking Products are required for the following occupancy groups:

- A** - Assembly
(For Public Events)
- B** - Business
- E** - Education
- R1** - Hospitality / Hotels
- I** - Institutional / Hospital
- M** - Mercantile

New facilities 75 feet or taller that fall into one of the following occupancies must install approved luminous egress path markings as per Section 1024 if the 2009 IBC. To remain on par with newer facilities existing buildings can also install these same products.

"In an effort to provide safe egress in each of our facilities, we have decided to use Jalite Exit signs, as our standard, throughout our facilities nationwide....Jalite signage demonstrates a much higher luminance than any of the other signs we have seen ...[and] have a much longer life cycle."

**Senior Director of Safety
Genco Loss Prevention**



www.jalite.com

JALITE INC - 202 7th Street, Matamoras, PA 18336
Free 800.9014374 Tel 570.491.2205 Fax 570.491.2206
sales@jaliteusa.com www.jaliteinc.com